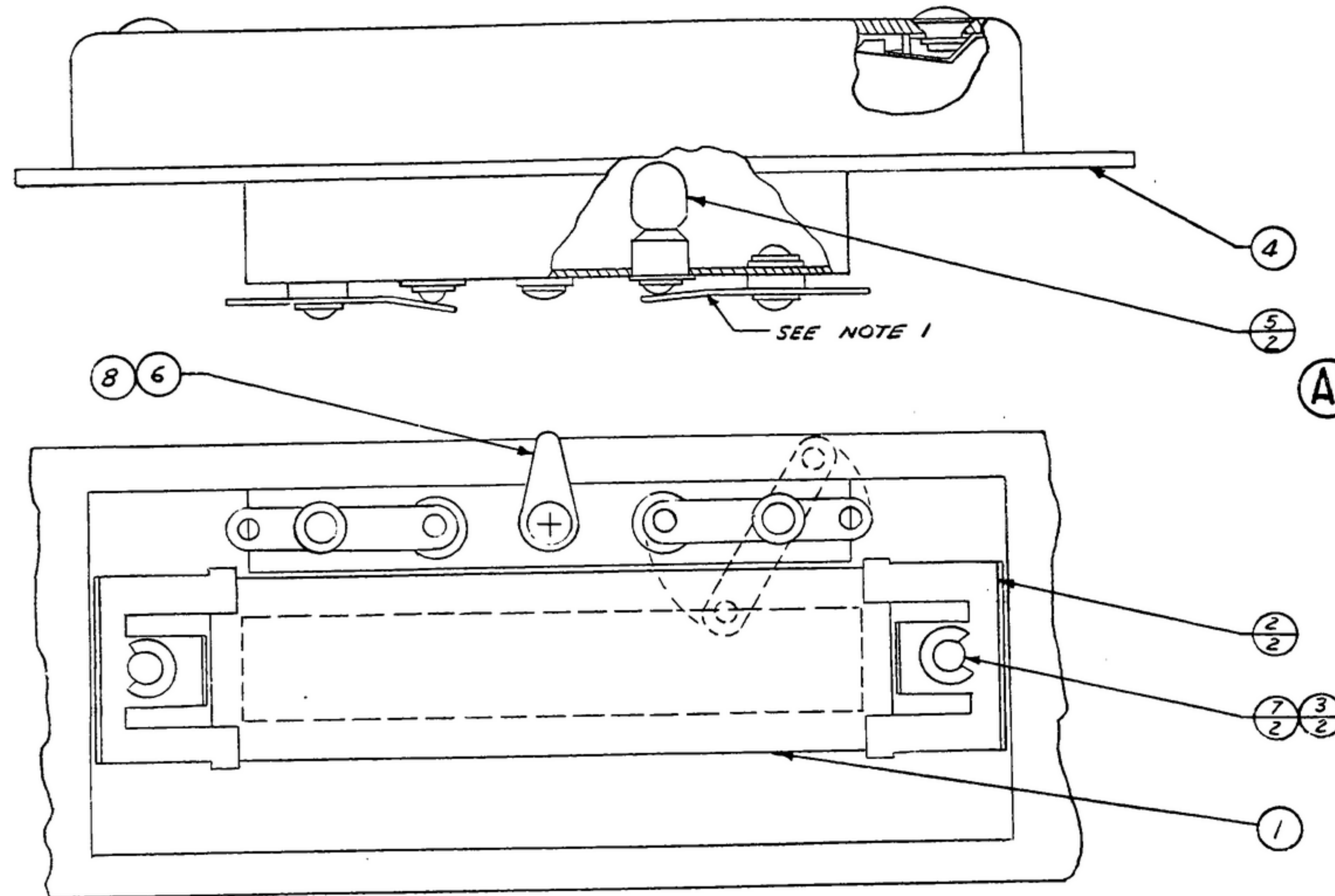


NOTICE: WHEN GOVERNMENT DRAWINGS, SPECIFICATIONS, OR OTHER DATA ARE USED FOR ANY PURPOSE OTHER THAN IN CONNECTION WITH A GOVERNMENT-RELATED GOVERNMENT OPERATION, THE UNITED STATES GOVERNMENT TAKES NO RESPONSIBILITY FOR ANY OMISSION, INADEQUACY, OR THE FACT THAT THE GOVERNMENT HAS NOT BEEN ADVISED OF SUCH USE. THE GOVERNMENT WILL NOT BE HELD RESPONSIBLE FOR ANY OMISSION, INADEQUACY, OR THE FACT THAT THE GOVERNMENT HAS NOT BEEN ADVISED OF SUCH USE. THE GOVERNMENT WILL NOT BE HELD RESPONSIBLE FOR ANY OMISSION, INADEQUACY, OR THE FACT THAT THE GOVERNMENT HAS NOT BEEN ADVISED OF SUCH USE.

"THIS DOCUMENT HAS BEEN PURCHASED BY THE GOVERNMENT AND MAY BE REPRODUCED AND USED IN CONNECTION WITH ANY GOVERNMENT PROGRAM OR MAINTENANCE OPERATION."

NOTE: \*FOR INFORMATION ONLY, CONTRACTOR MAY AT HIS OPTION DEVIATE FROM THESE PROCESS DETAILS

REVISIONS			
SYM	DESCRIPTION	DATE	APPROVAL
A	(1) NOTE-3, PART NO. WAS 5555-12	28 FEB 1966	JLG R2 JM R2



NOTES

1. FORM CONTACT AS REQUIRED TO MAKE FIRM CONTACT TO LAMP BASE
2. IN ALL SPLIT BALLOONS TOP FIGURE IS MATERIAL LIST ITEM INDICATOR & BOTTOM FIGURE IS QUANTITY
3. AS SUPPLIED BY WALDES KOHINOOR INC., LONG ISLAND CITY, N.Y., PART NO. 5100-12 OR EQUAL.

S.W.E. PART NO.	ITEM	REQD	PART NO.	DESCRIPTION	MATL	MATL SPEC
<del>42S1112543</del>	8	1	MS35216-12	SCREW		FF-5-92
	7	2	SM-C-343607H	RING-RETAINER		3
	6	1	SM-B-249256	TERMINAL SOLDER		
	5	2	MS25237-328	LAMP		
	4	1	SM-C-343606	HOUSING ASSY		
	3	2	SM-B-179043	STUD		
	2	2	SM-B-179042	CLAMP		
	1	1	SM-B-283263	WINDOW		

LIST OF MATERIAL

UNLESS OTHERWISE SPECIFIED DIMENSIONS ARE IN INCHES TOLERANCES ON FRACTIONS DECIMALS ANGLES		STEWART-WARNER ELECTRONICS ORDER NO. 42428-PC-59		<b>HOUSING ASSY COUNTER</b>		DEPARTMENT OF THE ARMY SIGNAL CORPS ENGINEERING LABORATORIES FORT MONMOUTH NEW JERSEY  <b>SM-C-343607</b>	
		SIGNAL CORPS					
Drawn By: <i>P. J. [Signature]</i>		REVIEWED: <i>PME</i>					
Checked By: <i>[Signature]</i>		APPROVED: <i>PME</i>					
SM-D-249134	SC-DL-248775	Chief Drafts: <i>[Signature]</i>		DATE: 28-OCT-59	SCALE: 2/1		
APPLICATION		Eng. Approv: <i>[Signature]</i>					

WHEN REFERRING TO THIS DRAWING STATE DRAWING NO., APPLICABLE ISSUE SYMBOL, IF ANY, AND DATE.